

Birchwood Townhomes

486 Range Lake Road

#4,5,6,7,10,11,12,13

Rent: Please see website for details.

Damage Deposit: Equal to one months rent

1/2 on move in 1/2 over 3 months

Electricity: Average of \$150.00 to \$200.00/
month

Water: Average \$100.00

Heat: Included

Cable/Satellite: Extra

Phone: Extra

Pets: Yes

These large spacious townhouses are the perfect place to raise a family. This building is close to the hospital and is directly across from St Joseph's School. Each unit has a fenced back yard, with units #3-8 facing onto Range Lake. Each of these units have storage rooms under the stairs, storage on the second floor as well. And of course each has its own washer/dryer and dishwasher. This great little neighborhood even has a common playground for the kids to play!

YKD Property Management Ltd.

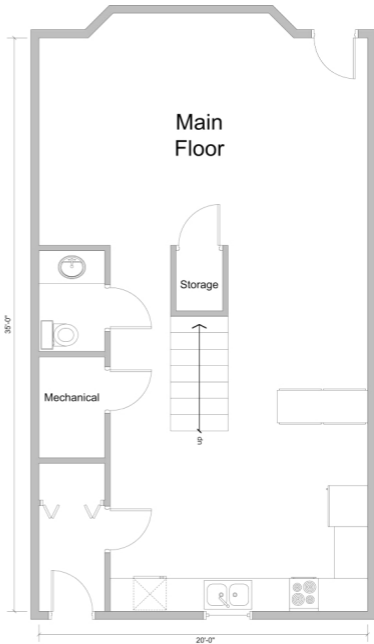
Box 385, 4915-49th Street

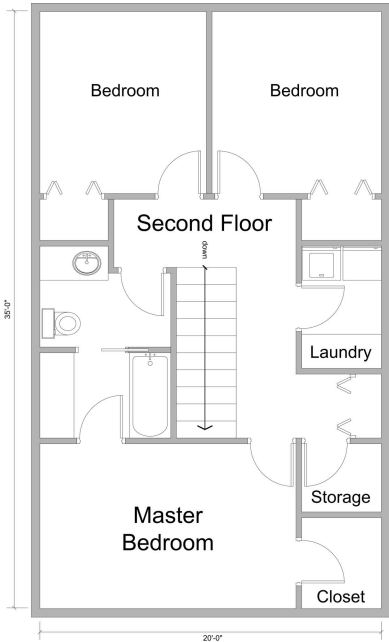
Yellowknife NT, X1A 2N3

Phone: (867) 873-1038

Fax: (867) 920-4174

info@ykdpropertymanagement.com





Bedroom

Bedroom

Second Floor

35'-0"

up

down

Laundry

Master
Bedroom

Storage

Closet

20'-0"